

# US ARMY CORPS OF ENGINEERS, NEW ORLEANS DISTRICT UPDATE

USCG Industry Day

COL Cullen Jones, P.E., PMP  
District Engineer and Commander  
US Army Corps of Engineers  
New Orleans District

10 May 2024



U.S. ARMY  
of Engineers®





U.S. ARMY

# NEW ORLEANS DISTRICT

## SERVING SOUTH LOUISIANA AND THE NATION



**Our Vision – A World-Class Organization Safely Delivering a Quality Program, On-Time and Within Budget for South Louisiana, the Region, and the Nation.**

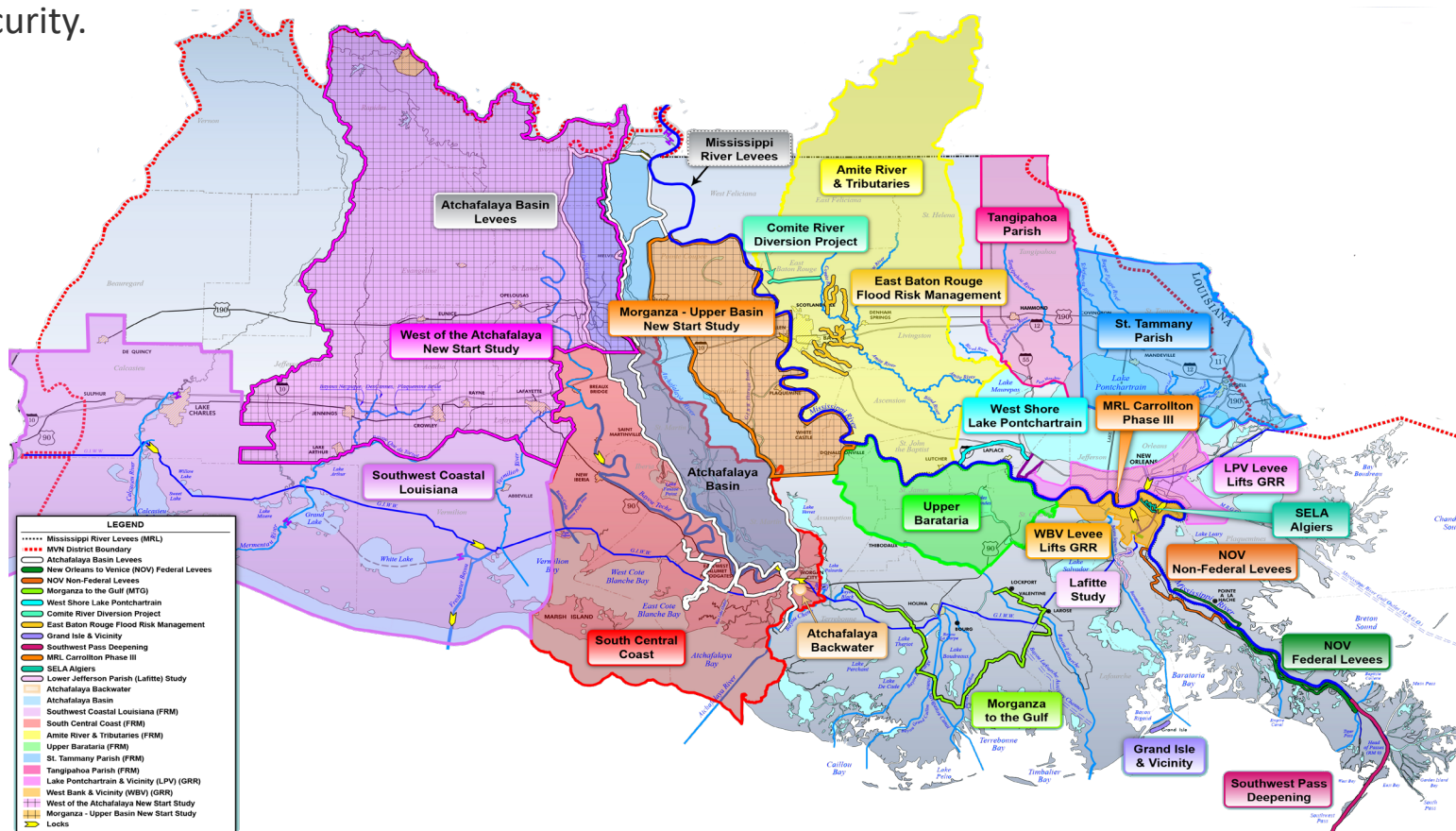
Our Mission: Advance the Nation’s interests by delivering vital engineering services, in collaboration with our partners, for flood, hurricane and storm damage risk reduction; navigation; ecosystem stewardship; emergency operations; and support to National Security.

### AREA OF RESPONSIBILITY

- For the Life, Property and Prosperity of over **3.4 Million Residents**
- **2,800** miles of navigable waterway
- **973** miles of Mississippi River and Tributary levees
- **325** miles of hurricane risk reduction levees
- **5** of the nation’s 15 busiest ports

### FISCAL YEAR 2023

- **1,153** Full Time Employees
- **\$1.2B** Executed (FY22: \$941M)
  - **1,028** contract actions
  - **\$183 M** awarded to small business



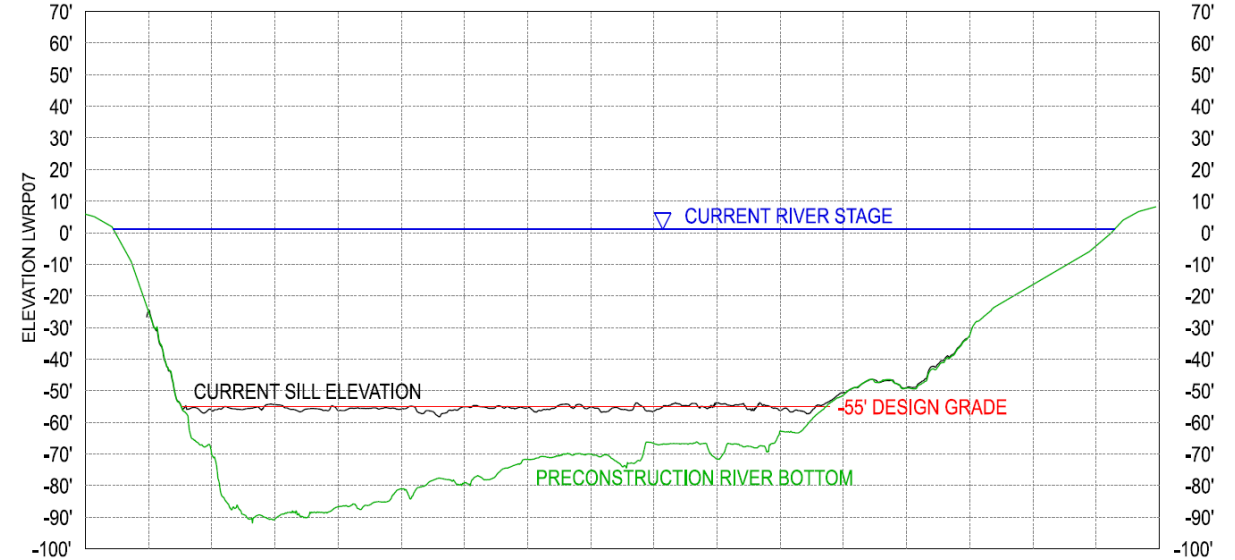
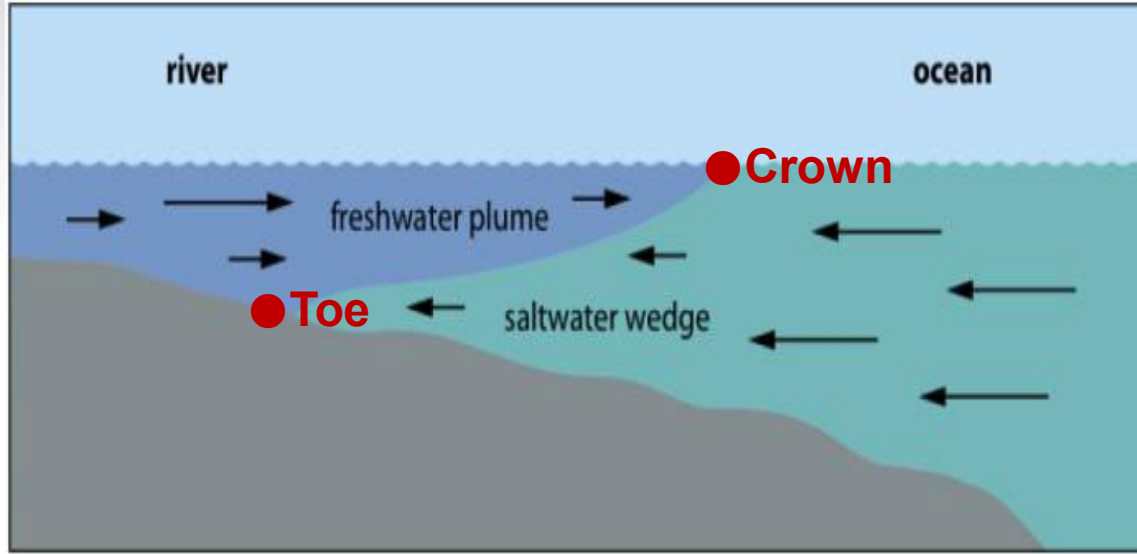


U.S. ARMY

# SALTWATER WEDGE



## HOW DID WE GET HERE



1988

1999

2012

2022

June 2023

July 2023

First Sill Construction

Second Sill Construction

Third Sill Constructed

Forth Sill Constructed

Saltwater incursion EOC Activated

Fifth Sill Construction Completed



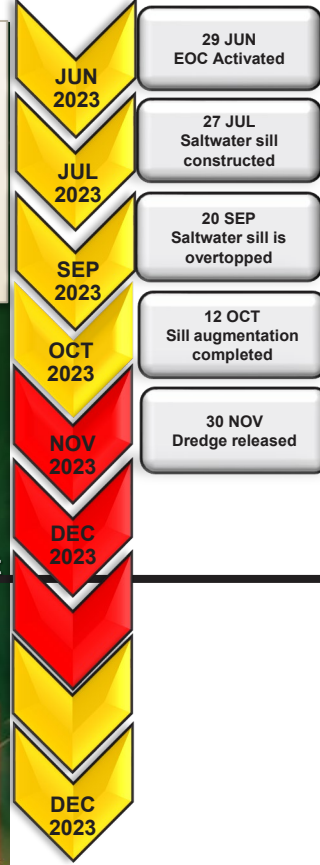
# SALTWATER WEDGE

U.S. ARMY

# COP PLACEMAT



as of 0800 08 JAN 24

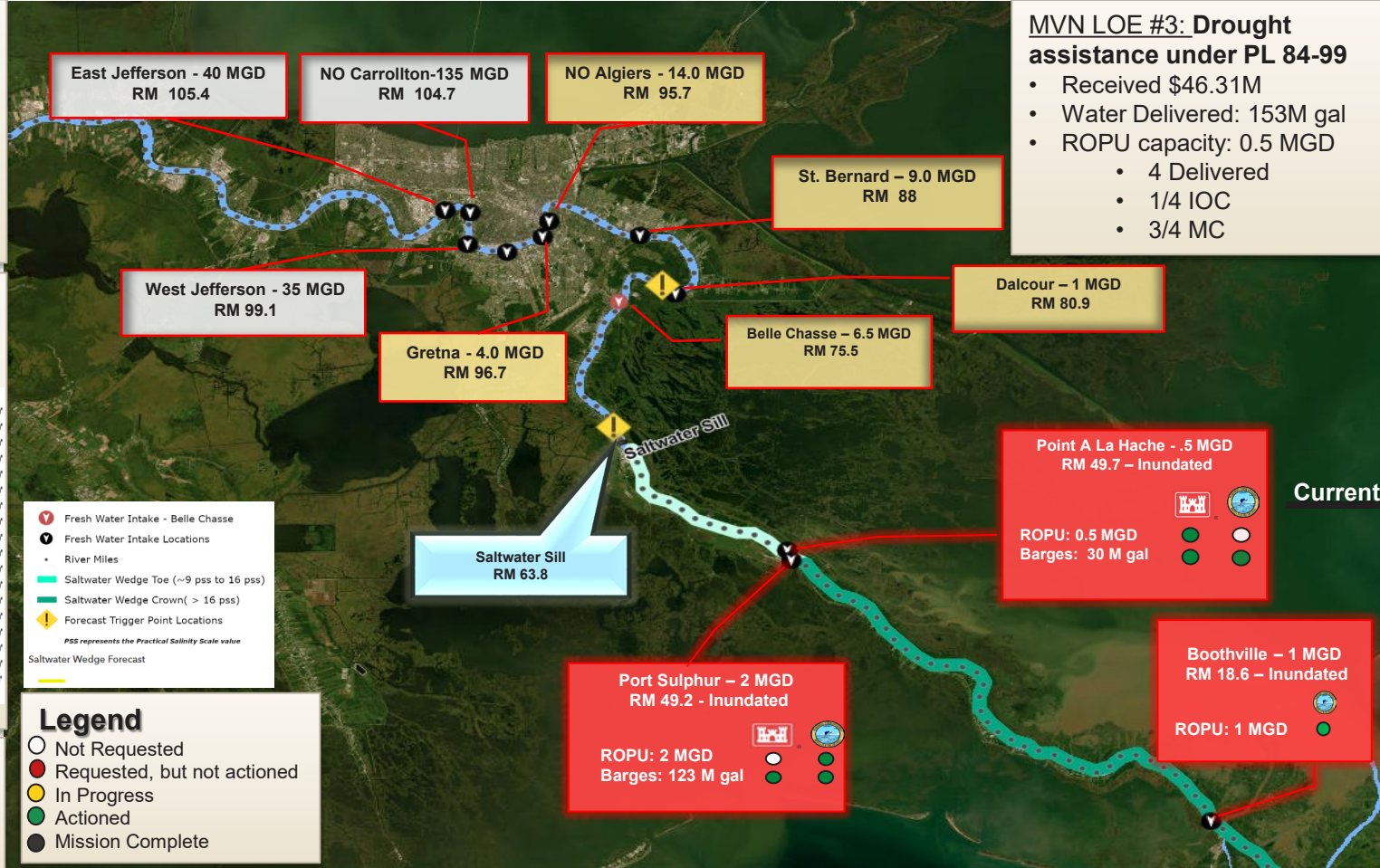
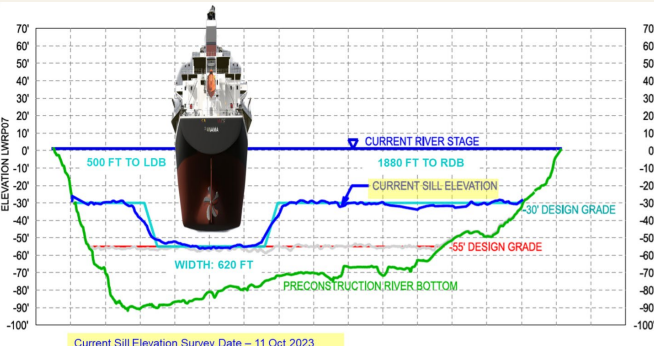


## MVN LOE #1: Monitor and Track the Saltwater Wedge

- Location of toe: RM 63.5
- Location of crown: RM 48.5
- Current flow rate: 203K CFS ↑
- Yesterday's flow rate: 188K CFS
- 21-Day flow forecast: 200K CFS ↑

## MVN LOE #2: Saltwater Sill Augmentation

- Current 100% complete as of 12 Oct
- Dredge released.

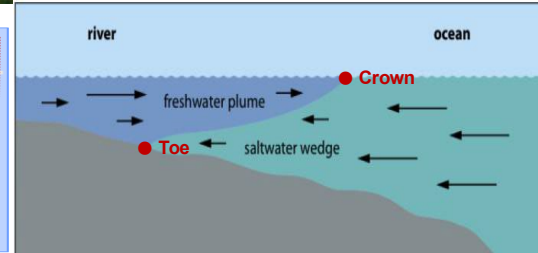
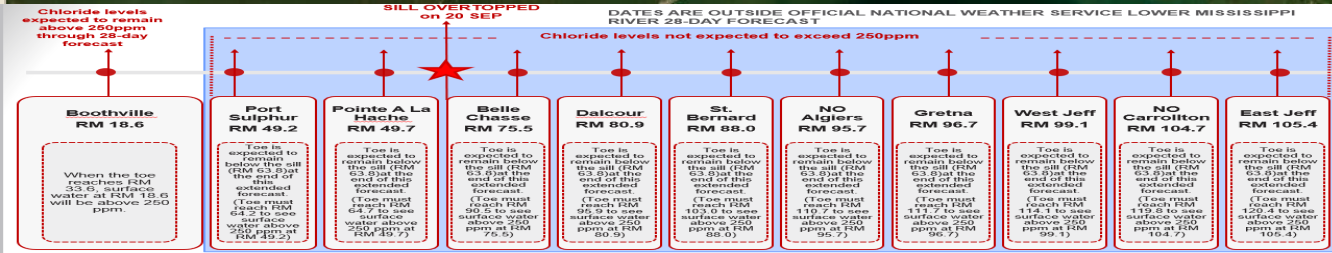


## MVN LOE #4: Communication

- GOHSEP Coordination Calls: As Needed
- JIC calls: As Needed
- Latest Forecast Timeline: 02JAN24

## MVN LOE #5: Expedited Permitting

- JP west bank: ●
- Algiers cofferdam: ●



# MVN NAVIGATION MISSION

LARGEST IN USACE



Old River

Atchafalaya Basin Area

Calcasieu River

Gulf Intracoastal Waterway (GIWW)

Mermentau River

Freshwater Bayou

Atchafalaya River

Baptiste Collette

Barataria Bay Waterway

Houma Navigation Canal

Bayou Lafourche

Mississippi River

LEGEND	
	Dredged Areas
	Calcasieu River
	GIWW
	GIWW Alterante Route
	Atchafalaya River & Basin
	Southeast Waterways
	Mississippi River



U.S. ARMY

# NAVIGABLE WATERWAYS

# OPERATION AND MAINTENANCE



## USACE Role

Operate and Maintain ~2,800 Miles of Navigable Waterways

## Importance

5 of the Top 15 Ports in the U.S.

## Strategic Investment

- 2 Petroleum Reserves
- 4 Emergency Underground Fuel Storage Facilities
- LA Offshore Oil Port
- Henry Hub

## Major Waterways and Channels

- Mississippi River Ship Channel
- Gulf Intracoastal Waterway
- Calcasieu River and Pass
- Atchafalaya Basin





U.S. ARMY

# NAVIGABLE WATERWAYS



## MISSISSIPPI RIVER SHIP CHANNEL

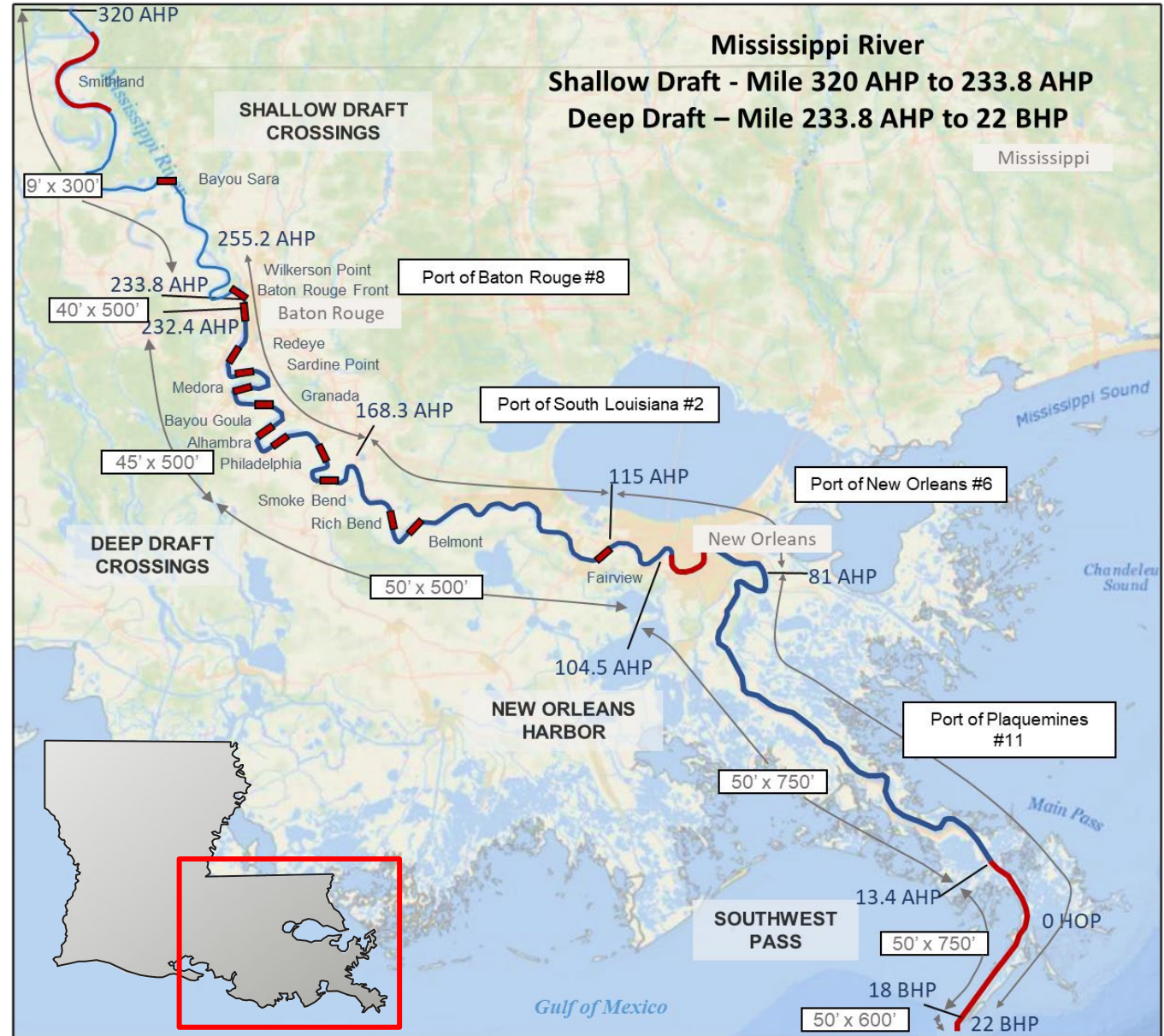
### New Orleans District

- 256 Miles of Deep Draft (>15')
- 86 Miles of Shallow Draft (<15')

### Largest Port Complex in the US

- Port of South Louisiana #2
- Port of New Orleans #6
- Port of Greater Baton Rouge #8
- Port of Plaquemines #11

438M Tons of cargo/year including grain, coal, steel, containers, coffee, natural rubber, chemicals, agricultural products, manufactured goods, passenger cruises and more





# Mississippi River Deepening



## Mississippi River, Baton Rouge to the Gulf of Mexico



### LEGEND

- River Crossings & Dredged Areas
- Mississippi River
- AHP** Above Head of Passes
- BHP** Below Head of Passes





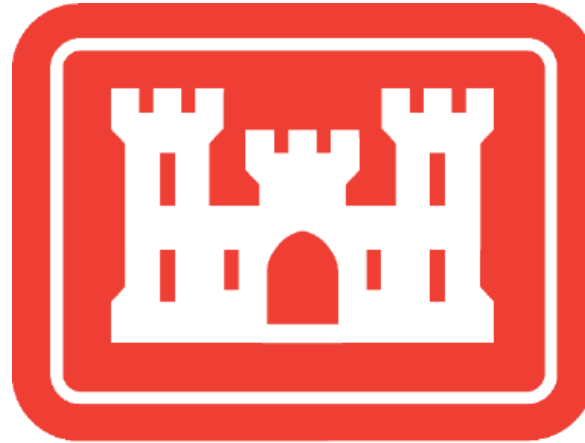
U.S. ARMY

# MISSISSIPPI RIVER SHIP CHANNEL DEEPENING

## IT'S A TEAM SPORT



LOUISIANA DEPARTMENT OF  
TRANSPORTATION & DEVELOPMENT



BIG RIVER COALITION



SOY TRANSPORTATION  
COALITION



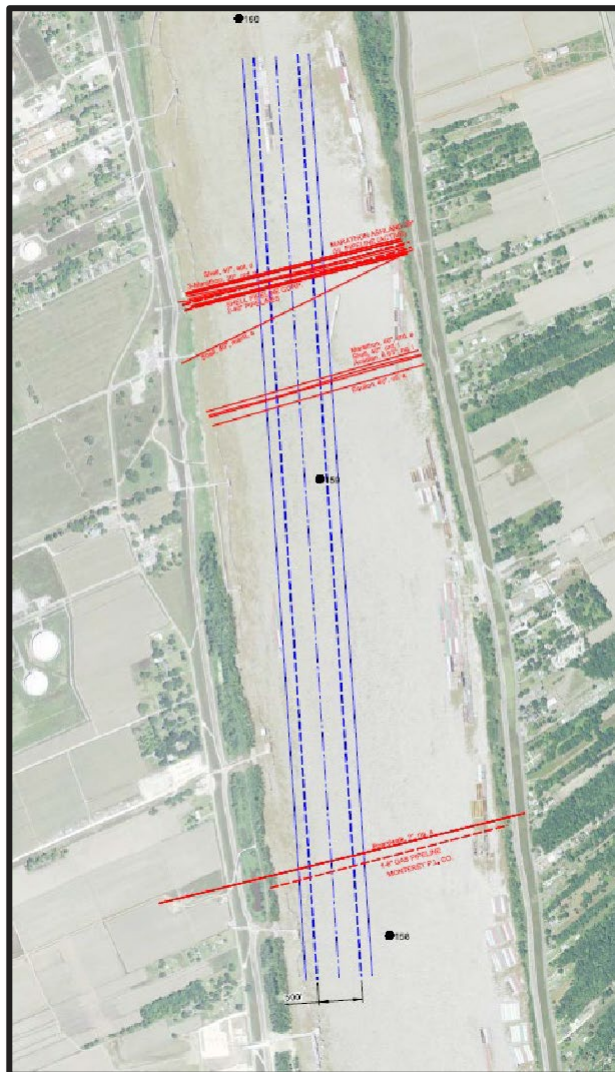
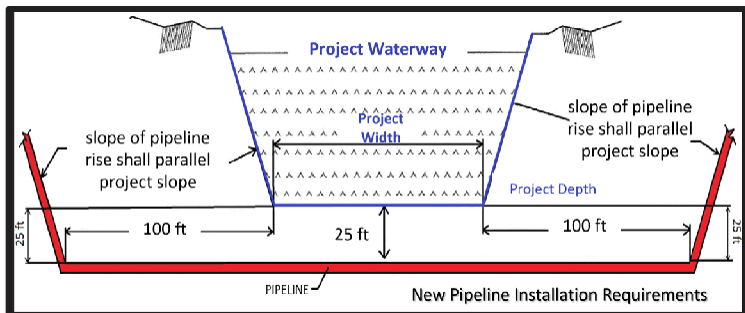
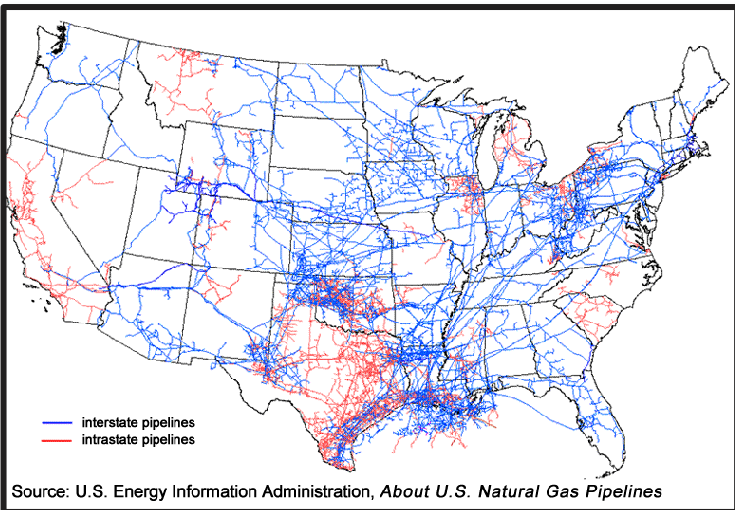
• A S S O C I A T E D •  
**BRANCH PILOTS**  
SAFETY • ECONOMY • ENVIRONMENT





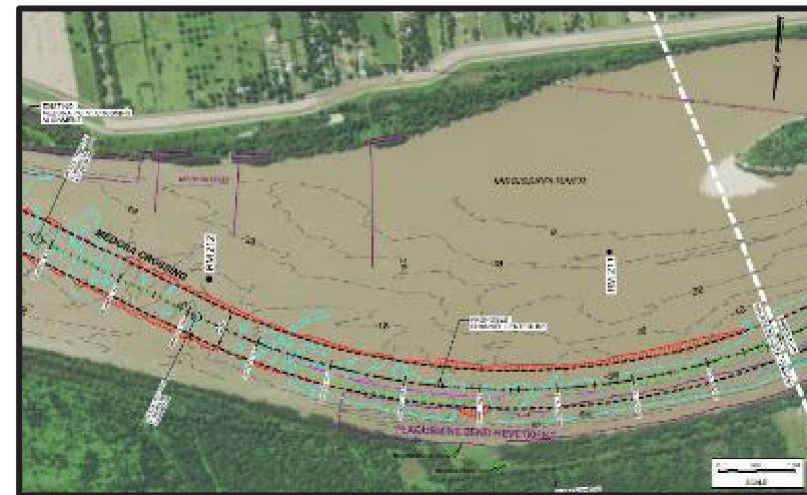
# MISSISSIPPI RIVER SHIP CHANNEL DEEPENING CHALLENGES

## Utility Crossings & Relocations



Example of utility crossings beneath the MRSC at Rich Bend

## Channel Alignment



## Aids to Navigation



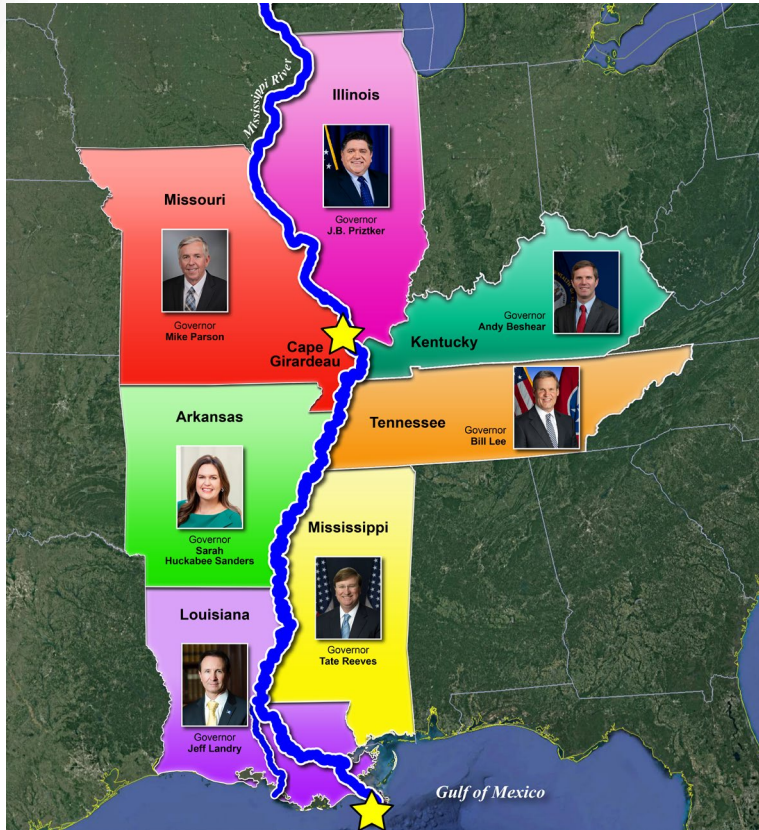


U.S. ARMY

# LOWER MISSISSIPPI RIVER COMPREHENSIVE MANAGEMENT STUDY



## Study Area



## Authority

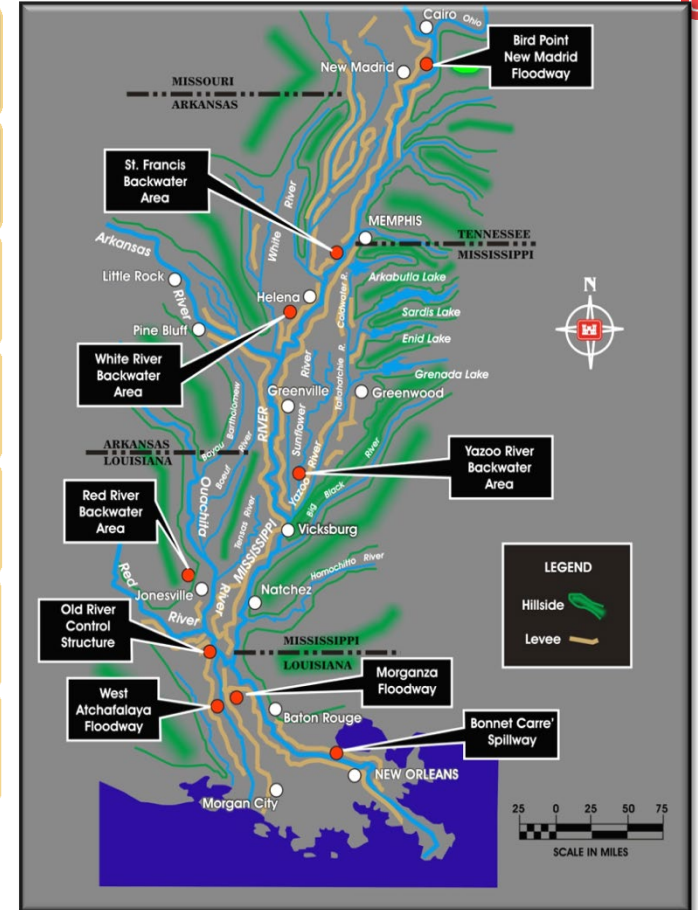
- Section 213 of WRDA 2020
- Comprehensive Look at Mississippi River System
- Geographic Scope Covers Cape Girardeau, Missouri to the Gulf of Mexico
- Multi-Purpose Study - Covers Flood Risk Management, Navigation, Ecosystem and Environmental Restoration, Water Supply, Hydropower Production, Recreation and Other Purposes
- Opportunity for Tiered Studies
- Will Result in Programmatic and Actionable Features

### Accomplishments to date:

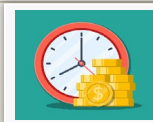
- Hosted planning charette workshops (2023 Oct – Nov)
- Direct engagement with stakeholders (2023 – ongoing)
- Hosted public orientation session (2024 January)
- Hosted Interagency Meeting (2024-February)
- Hosted 32 Public Scoping Meetings (2024-February-March)



LOWER MISSISSIPPI RIVER COMPREHENSIVE MANAGEMENT STUDY



Study Duration: 5 Years



Total Study Cost: \$25 M

- Fiscal Year 22: Received \$5 M (Earmark)
- Fiscal Year 23: Received \$1 M (PBUD)
- Fiscal Year 24: Expecting \$2.5 M (PBUD)

Study is 100% Federally Funded: Section 8343 of WRDA 2022

### Scoping

### Alternative Formulation & Analysis

### Feasibility Level Analysis

### Chief's Report

Begin Phase 0 Jan '23

End of Phase 0

Alternatives Milestone April '24

Tentatively Selected Plan Jun '25

Public Scoping Report Road Show Jul '25

Agency Decision Milestone Feb '26

MVN Report Transmittal

Chief's Report Dec '27

### State Partnering Group Timeline

- Formal Meetings Twice A Year (April and October)
- Early Look at Draft Feasibility Plan
- Public Scoping Report Road Show/Governors Meetings

- Interagency Meetings Held Twice A Year (February and September)
- Quarterly Public Information Sessions
- Team Available To Present Upon Request at Any Time



U.S. ARMY

# KEEP IN TOUCH WITH THE NEW ORLEANS DISTRICT

12



*Latest News, Announcements, Events & Connections*



**District website**

[www.mvn.usace.army.mil](http://www.mvn.usace.army.mil)



**Facebook**

[www.facebook.com/usacenola](http://www.facebook.com/usacenola)



**Instagram**

[www.instagram.com/usace\\_nola](http://www.instagram.com/usace_nola)



**X (Twitter)**

[twitter.com/usacenola](https://twitter.com/usacenola)



**LinkedIn**

Search - US Army Corps of Engineers New Orleans District